

Briefing: Office of Sustainability and Environment

Office of Sustainability & Environment

- Mayor Harrell's **One Seattle Climate Justice Framework**
- Green House Gas Inventory (Transportation Focus)
- Addressing Transportation Emissions and Climate Justice in the **One Seattle Plan & Seattle Transportation Plan**



ONE SEATTLE CLIMATE JUSTICE AGENDA

Equitable Clean Energy Economy

Just Transition Away From Fossil Fuels

Healthy, Resilient Communities

*Building on what we know works to accelerate investments
and prioritize actions that achieve Climate Justice.*



GHG Inventory

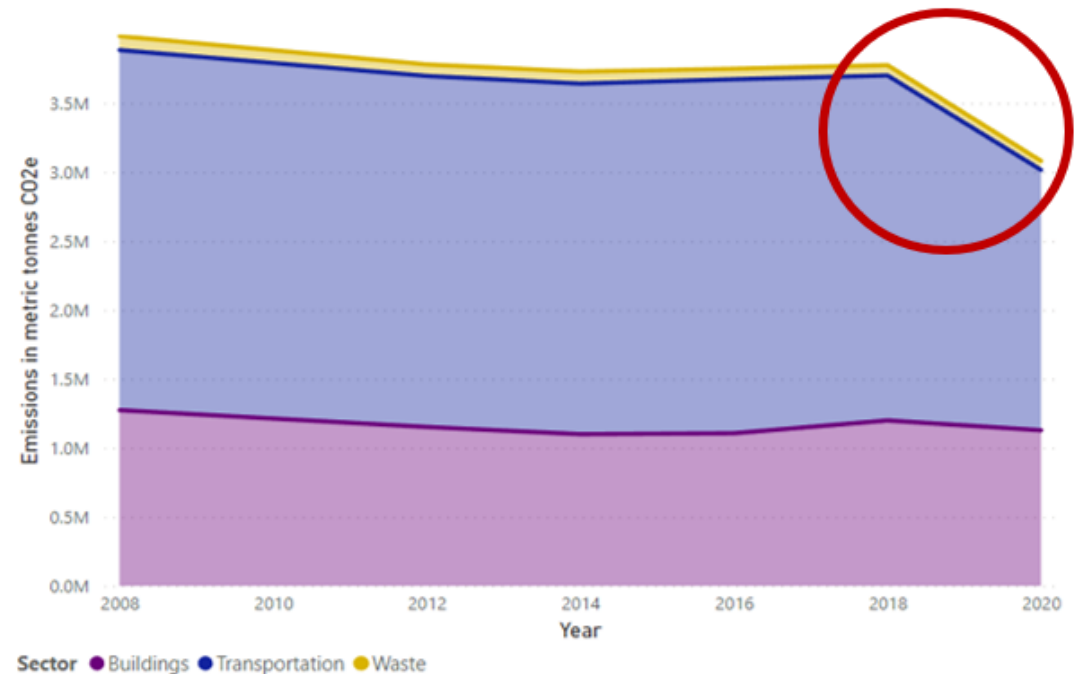
- Seattle conducts Citywide emissions report every two years.
- 18 to 24-month lag between inventory year and report release date
- Data is annual and city-wide => difficult to identify geographical and seasonal differences
- The Climate Portal will include more frequent and granular emissions indicators at a spatial level

2018 Community Greenhouse
Gas Emissions Inventory



Context for GHG Inventory (continued)

- This update covers calendar year 2020, which is the first time we have data capturing what happened during the COVID-19 pandemic lockdown.
- Largest reduction since we started measuring emissions, reflecting the type of year it was.



GHG Emissions Inventory Update: Transportation

Data Trends

24.5% decrease in road transportation emissions

~20% decrease in both passenger & freight VMTs

~5% decrease in emissions per mile

Inferences

Seattle's residents drove significantly less in 2020 primary due to COVID-19 lockdowns. This VMT reduction is likely temporary.

City mobility programs likely had an impact on lowering VMTs and will persevere, but no data to corroborate that direct link.

Vehicles on the road will continue to get gradually more efficient.

Calls to Action

If we do not take additional action we will likely revert to pre-pandemic VMT levels (or even higher levels) which were already inadequate for meeting our climate goals.

Aggressive movement toward mode shift & transportation electrification is necessary as Seattle's residents look to increase transportation activity.



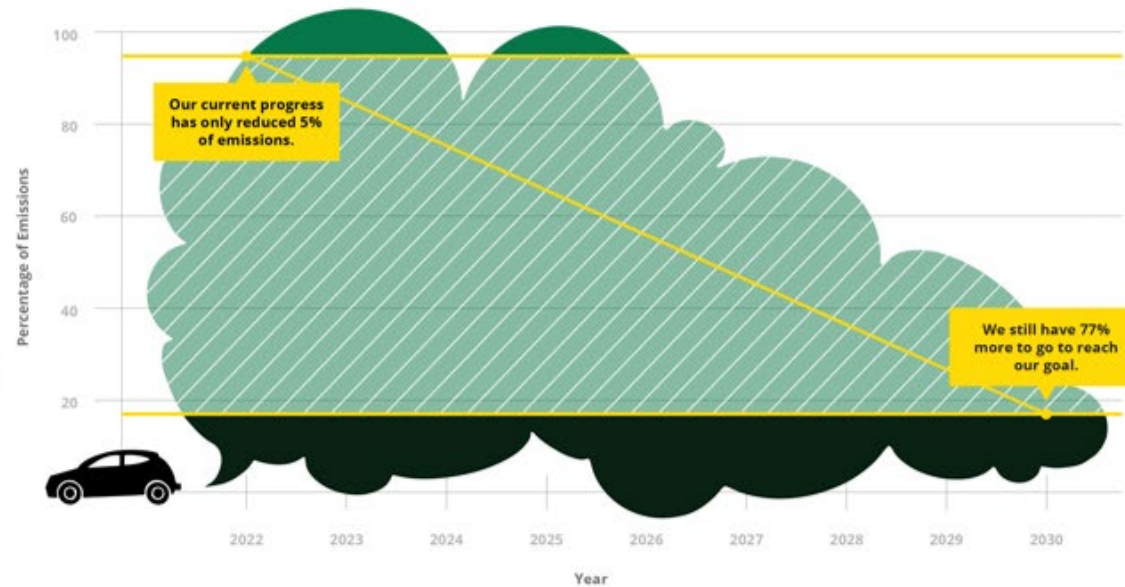
Our Commitments:

City of Seattle — By 2030:

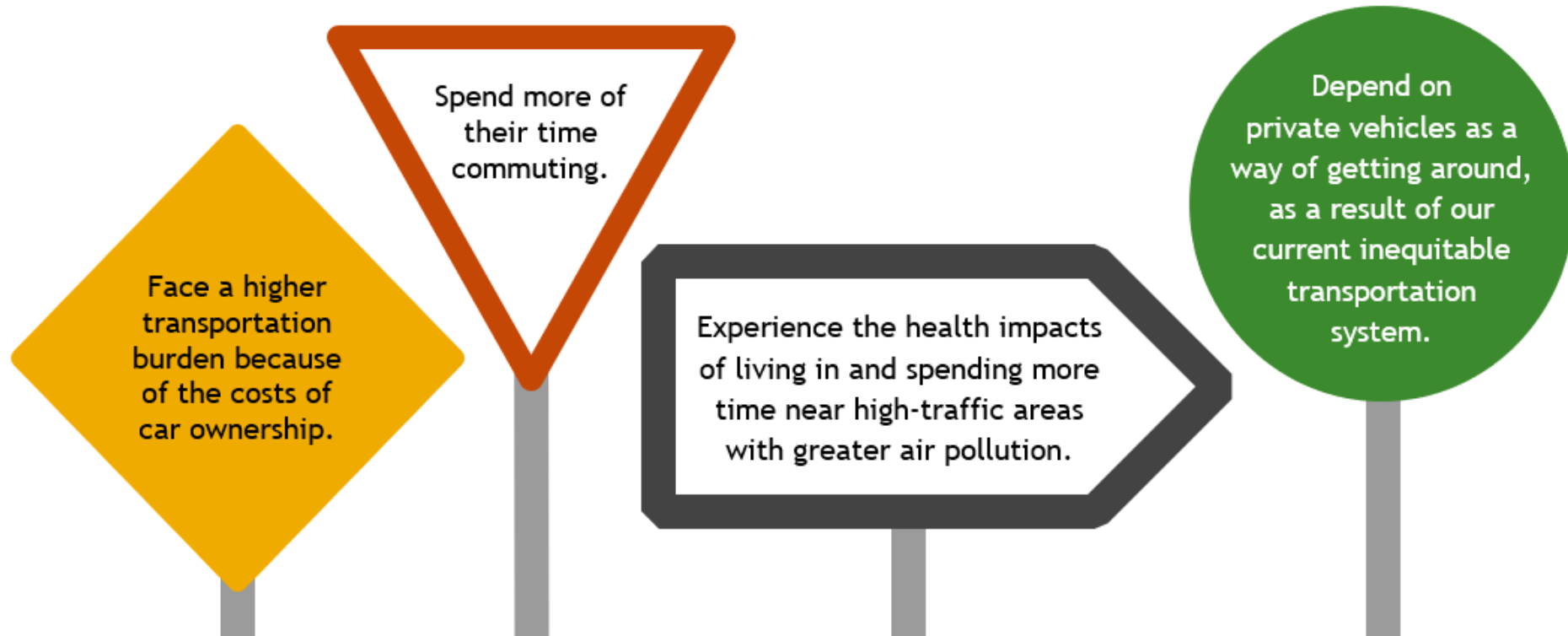
**Reduce transportation
emissions by 82%.**

Seattle Green New Deal — By 2030:

**Be climate-
pollution free.**



Residents of neighborhoods with higher-than-average BIPOC populations are more likely to:





Zero Emissions Future

Electrification

We can reduce emissions by making our streets more efficient, using policies that support behavior change and make it easier and safer for Seattleites to get where they need to go.

- Safe and accessible walking, biking, and rolling
- Prioritized transit with methods like Red Bus Only lanes
- Light rail expansion and investing in more bus service
- Increased density to make car-free lifestyles easier

Efficiency

Seattle can leave fossil fuels behind by **electrifying everything** that moves people, goods, and services.

- Invest in a fossil-free City fleet, while incentivizing others to do the same
- Electrification incentives for residents and small businesses (both financial, and priority curb access)
- Electrify high-polluting, high-mileage ferries, buses, freight trucks, and Port trucks
- Electrify ride sharing vehicles
- Expand electric grid infrastructure for a zero emissions future
- Designate an area of Seattle as a ZERO EMISSIONS ZONE, to model what the future could look like!

Resources to know about

- [2013 Climate Action Plan](#)
- [2021 Transportation Electrification Blueprint](#)
- 2021 Report from OSE to the Green New Deal: [Climate Impact Actions \(seattle.gov\)](#)



Now is the time to have
a conversation about how
land use and transportation
decisions can contribute to
progress toward our equity
and climate justice goals!



Questions for the Group

1. As we work to incorporate a new “Climate Element” into the Comprehensive Plan, what do you want to make sure we consider or incorporate?
2. Imagine a Seattle where we have achieved our climate goals – what does it look like to you? How do you get around?
3. Want to discuss this more?
Edie Gilliss, OSE, edie.gilliss@seattle.gov

